
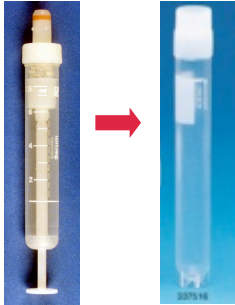
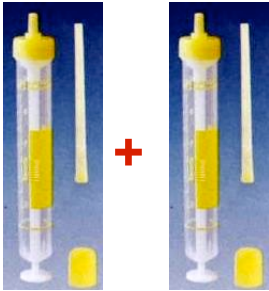
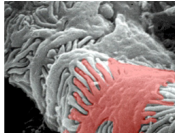


PodNet
Registry for Steroid Resistant Nephrotic Syndrome


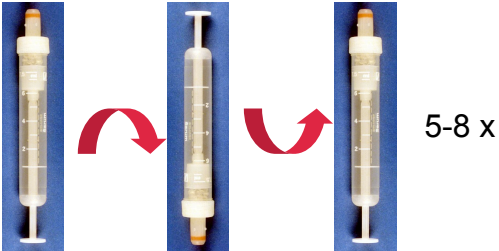
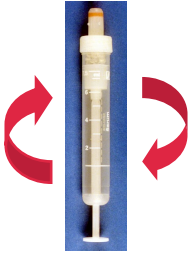
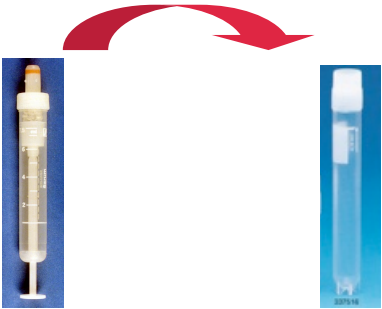
I. Instructions for Blood and Urine Samples

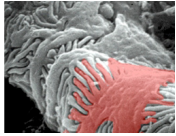
Sample	Tube	Instruction	Frequency
EDTA 5-10 ml		Send the correctly labeled tube directly at room temperature to the lab address below. Label: <div style="border: 1px solid black; padding: 5px; display: inline-block;">PODONET (EDTA) Center: Prague Study ID: P-PRA001 Date: 01.01.2009</div>	At one time point (e.g. study entry)
Serum 5-10 ml		Please follow handling instructions on p.2 Label: <div style="border: 1px solid black; padding: 5px; display: inline-block;">PODONET (Serum) Center: Prague Study ID: P-PRA001 Date: 01.01.2009</div> Store at < -20°C to (-80°C) until transport	Every 12 months
Urine 2 x 10 ml		Label: <div style="border: 1px solid black; padding: 5px; display: inline-block;">PODONET (Urine) Center: Prague Study ID: P-PRA001 Date: 01.01.2009</div> Store at < -20°C to (-80°C) until transport	Every 12 months



Podonet
Registry for Steroid Resistant Nephrotic Syndrome

II. Handling Instructions for Serum Samples

Step	Action	
1	Serum blood collection tube (5-10 ml)	
2	After drawing blood: Invert the tube gently 5-8 times	
3	Sample should be stored at room temperature for approximately 30 minutes	
4	Place the blood tube into the centrifuge and spin at 2000g , for 10 minutes at room temperature (within 60 min of collection)	
5	Pipette serum supernatant into labeled cryotube and store at $< -20^{\circ}\text{C}$ (-80°C , if possible)	 <div data-bbox="1145 1570 1390 1693" style="border: 1px solid black; padding: 5px; width: fit-content;"><p>PODONET (Serum) Center: Prague Study ID: P-PRA001 Date: 01.01.2009</p></div>

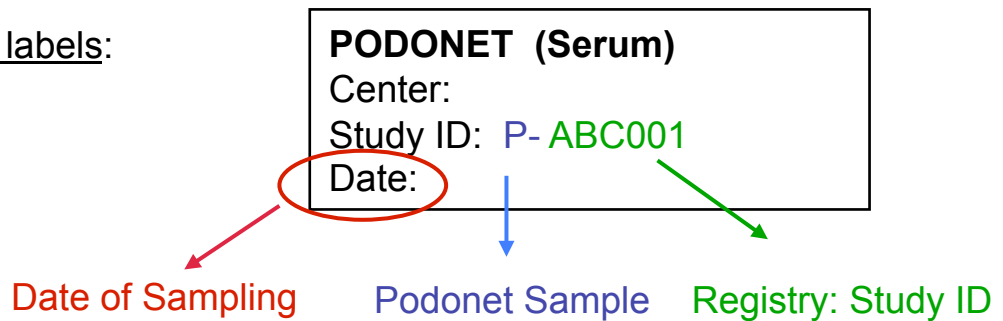


Podonet
Registry for Steroid Resistant Nephrotic Syndrome

III. Sample Labels

3 different labels:

EDTA
Serum
Urine



Example:

PODONET (Urine)
Center: Prague
Study ID: PRA001
Date: 13.03.2009

IV. Sample Transport

1. Please send EDTA samples at room temperature to:

Nephrologic Laboratory
% Agnes Trautmann/Barbara Rodenbeck
Verfügungsgebäude
Center for Children and Adolescent Medicine
University Hospital Heidelberg
Im Neuenheimer Feld 156
D-69120 Heidelberg
Germany

2. Serum and Urine samples are might be taken on dry ice to Network Meetings or sent directly on dry ice to the address above.